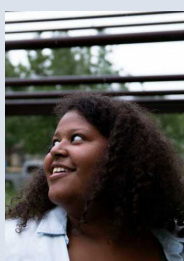


ENGAGING THE WORLD
LEADING
the conversation on

Health Equity

LECTURE SERIES



Dr. Timnit Kefela

Presidential Postdoctoral Fellow at ASU
Studies microplastic sources, pathways, and fates in urban soils and proximal marine environments.



Dr. Megan Mullin

Professor at UCLA
Researches how inequality in environmental risks and benefits shape political responses to environmental change.



Dr. Regan Patterson

Assistant Professor of Civil and Environmental Engineering at UCLA
Expert on environmental justice, transportation equity, and air pollution issues.



Sandy Sum

PhD candidate at UCSB
Investigates how patterns of social and economic inequalities shape environmental change and policies.

Environmental Health Equity

Monday, October 30, 2023
1:00 p.m.

Location: **Argyros Forum 201**

Moderated by Professor Patrick Hunnicutt

A panel of four researchers whose work is at the intersection of the environment and health equity. They will discuss the topic of health equity through an environmental lens and engage in Q&A.

Co-sponsor: Environmental Science & Policy

ETW events will be live streamed to the Great Room on the Rinker campus.

For more information on the Engaging the World series, scan the QR code or visit the link below



<https://www.chapman.edu/wilkinson/about/events/etw-health-equity.aspx>



CHAPMAN
UNIVERSITY

**Wilkinson College of
Arts, Humanities, and Social Sciences**

**Crean College of
Health and Behavioral Sciences**